



ATV930 : For High performance Solid and Mechanical movement.



Power range : 0.75 to 315kW
Voltage Range: 380 to 480V

Overload capacity:
ND : 110% for 60 sec
HD: **150% for 60 sec**

Communication: Modbus TCP & Ethernet IP–
Dual port for redundant communication

Optional Communication: EtherCAT, Profinet,
Profibus, etc.

IOs : **8 DI**, 3 RO, 3 AI, 2 AO, (standard)



No top cover

optional keypad

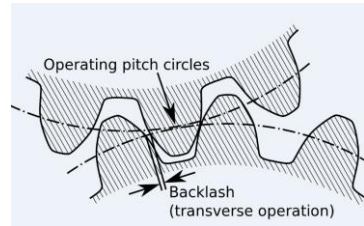
Short cover as standard

ATV930***N4Z (IP20/IP00)
Cabinet Integration offer
Power Range : 0.75 to 90 kW

User Benefits

Embedded application functions

- **Master/Slave with Multi Drive Link**
- Backspin for Progressive Cavity Pump
- Backlash sequence
- Rope slack for cranes
- **Break logic Control for hoisting**
- Safety function card

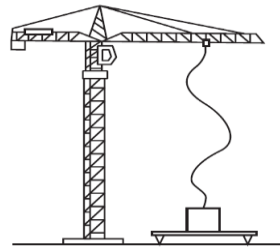


Energy efficiency :

- Energy monitoring with accuracy >95%
- Embedded **energy dashboards** - periodic trends
- Monitor energy consumption, detect the abnormality in power consumption (too high/low)

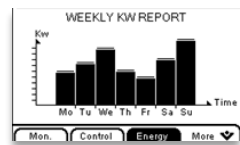
Withstand Harsh environment :

- **3C3 & 3S3 coated**
- Ambient temperature is **50° C** without deration
- Graphical detachable **keypad IP65**



Future ready IIOT drive :

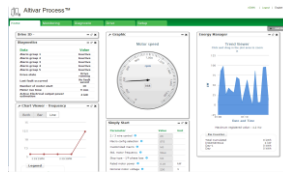
- Remote monitoring -**Webserver** is embedded
- Achilles certified – against cyber threats
- Ethernet embedded



Service oriented drive:

- Real time data is available
- 5 maintenance scheduling events available
- Diagnostic of IGBT on single click
- **Dynamic QR code** – troubleshooting

SIL3/PLe Certified VFD
DC choke inbuilt (0.75 – 315kW)



[Altivar Process ATV930 catalog](#)

Targeted applications

MMM:

Long Conveyor, Downhill Conveyor, Kiln, Pusher car, St stacker reclaimer, Hopper Gate Control, Skip Drive, Cranes, Lift, Roller Table, Crusher, Vibro feeders, etc with or without **Master Slave, AFE, asset management**



O&G:

Progressive Cavity Pump, Electrically Submersible Pump, with or without **Backspin control**, offshore rig, Onshore Extraction, Cranes, Pipeline control.



CPG:

Sugar crusher, Conveyor, Mixer, Centrifuge, Hot rotary dryers, Pulper, Winder-Unwinder, Mixer

